

100 CANNON STREET

LONDON EC4

City core offices available to let benefiting from new landlord fit out



BUSINESS READY

100 Cannon Street offers 23,455 sq ft of bright, flexible office space in a prime City of London location. The building offers spacious floors available in either contemporary CAT A or fitted CAT B.



AVAILABILITY

FLOOR	SQ FT	SQ M	FIT OUT	STATUS
7TH	3,583	332.8	CAT A	Coming Soon
5TH	5,688	528.4	CAT A	Coming Soon
PART 4TH	2,216	205.8	CAT B	Available Now
2ND	6,024	559.6	CAT B	Available Now
1ST	5,944	552.2	CAT A	Available Now
TOTAL	23,455	2,179.0		

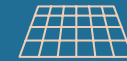




SPECIFICATION



New landlord fit out on
floors 2 and Part 4th



New CAT A on
floors 7, 5 & 1



Manned reception



24 hour access



Raised floor



New Led Lighting



Bicycle storage
& showers



Two passenger lifts



2ND FLOOR

6,024 SQ FT / 559.6 SQ M

- 56x Workstations
- 2x 6 person meeting rooms
- 1x 4 person meeting room
- 1x 10 person meeting room
- 2x Collaboration areas
- 6x Breatout areas
- 2x Focus pods
- 1x Teapoint

- Office floor
- Meeting rooms



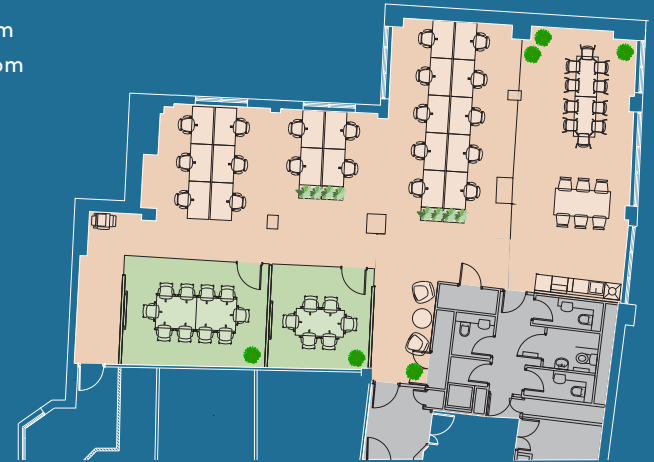
CANNON STREET

PART 4TH FLOOR

2,216 SQ FT / 205.8 SQ M

- 20x Workstations
- 1x 6 person meeting room
- 1x 10 person meeting room
- 1x Collaboration area
- 1x Breatout areas
- 1x Teapoint

- Office floor
- Meeting rooms



CANNON STREET



CONNECTED & CENTRAL

With Bloomberg Arcade, One New Change and The Royal Exchange on the doorstep, and exceptional transport links with Bank Station located opposite the building and Cannon Street Station less than 30 seconds away, 100 Cannon Street delivers unmatched connectivity and convenience.



Leadenhall Market



The Royal Exchange



Bloomberg Arcade



The Royal Exchange





100 CANNON STREET
LONDON EC4



CBRE

JONTY ROBINSON

07748 654 997

j.robinson@inglebytrice.co.uk

MALCOLM TRICE

07791 049 792

m.trice@inglebytrice.co.uk

DANA HENRY

07494 232 304

dana.henry@cbre.com

TOM MEIJER

07540 595 379

tom.meijer@cbre.com

TEDDY TOALSTER

07889 848 150

t.toalster@inglebytrice.co.uk

WILL GREED

07740 354 436

will.greed@cbre.com

Important notice relating to the Misrepresentation Act 1967 and the Property Misdescriptions Act 1991: (i) the particulars are set out as a general outline only for guidance of intending purchasers or lessees and do not constitute, nor constitute part of, an offer or contract (ii) all descriptions, dimensions, references to condition and necessary permission for use and occupation, and other details are given in good faith and are believed to be correct, but any intending purchasers or occupiers should not rely on them as statements or representations of fact, but must satisfy themselves by inspection or otherwise as to the correctness of each of them. November 2025

Marketing: [Stuart Chapman Design](#)